

Location Saisonnière à partir de € 410/sem

Holiday Let from €410/week

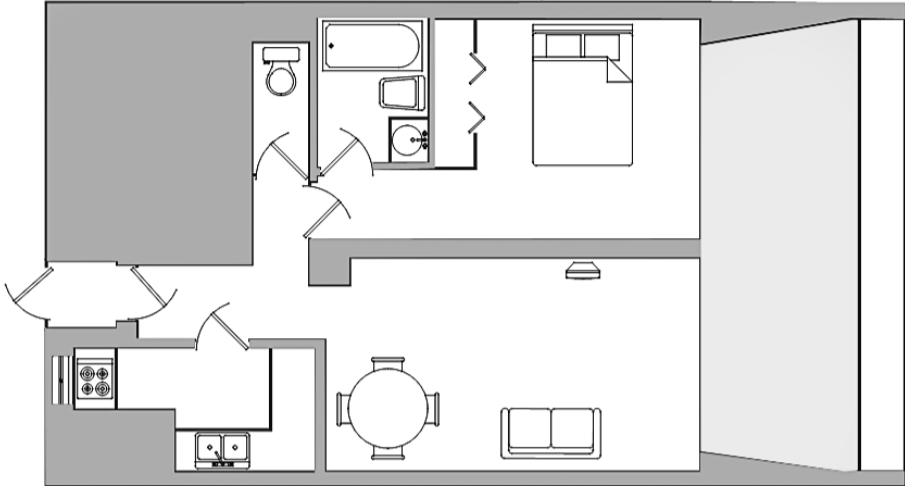


Realtors / Agents Immobiliers
 Sales / Ventes
 Rentals / Location
 Holiday lets / Location vacances
 Valuation / Expertise
 Management / Gestion

Le Commodore
BP-75
Marina Baie des Anges
06271 Villeneuve-Loubet Cedex
 tel +33 (0)4 93 22 55 22
 web www.immobiliere-pelou.com
 email info@immobiliere-pelou.com

Type Property Type	2 pièces 1 bedroom apartment
Localité Location	Marina Baie des Anges
Surface Habitable Floor Area	50 m² + 12 m² Terrasse

For Information Only - Not to Scale - Document Non Contractuel



Ceiling Height - Hauteur SP 2,70m
 Kitchen - Cuisine 2,89m x 2,02m = 5,84m²
 Living 5,76m x 3,45m = 19,85m²
 Bedroom - Chambre 3,20m x 4,08m = 13,1m²
 Bath - SDB 2,31m x 1,70m = 3,93m²
 Terrasse 2,42m x 6m = 14,54m²

© Laurent@3mille.com pour Immobilière Pelou

